



helphub.starrv.com



helphub.jucy.com

Contents

| | |
|--|----|
| Description of keys | 3 |
| Vehicle equipment | 5 |
| Starting the vehicle | 6 |
| Windows & vents | 7 |
| Entry door | 8 |
| Outdoor step | 9 |
| Seatbelts & baby seats | 10 |
| 240-volt electrical system | 11 |
| 12-volt electrical system | 12 |
| Microwave | 14 |
| Fresh water tank & water access | 15 |
| Grey water tank | 16 |
| Water pump | 17 |
| Hot water heater | 18 |
| Toilet use | 19 |
| Toilet cassette | 20 |
| Gas bottle | 21 |
| Stove top & grill | 22 |
| Heater & air conditioner | 23 |
| Fridge | 24 |
| Lights | 31 |
| Television | 32 |
| Media | 33 |
| Bed conversion | 34 |
| Storage | 37 |
| Awning | 38 |
| Diesel fuel | 40 |
| AdBlue | 41 |



helphub.starrvc.com



helphub.jucy.com

01. Description of keys



IGNITION KEY:

Use the ignition key to:

1. Start your vehicle
2. Lock or unlock the fuel tank's cap.



REMOTE KEY:

Some vehicles may have a push to start button. While driving, place keys in the cupholder next to the driver in order for the vehicle to operate.



Iveco



Mercedes



SIDE ENTRY DOOR:

Use this key to lock or unlock the vehicle's side entry door lock.



Iveco and Mercedes



EXTERNAL STORAGE COMPARTMENTS:

Use this key to lock or unlock the vehicle's external storage compartments including:

1. LP gas compartment on rear passenger's side
2. Storage compartment which can be opened from the rear driver's and passenger's side and small storage compartment besides passenger's cabin door
3. Toilet cassette compartment



Try our online **help hub.**



helphub.starrv.com



helphub.jucy.com



Iveco



FRESH WATER KEY:

Use the small black and gold key to lock or unlock the freshwater tank located on the passenger side of the vehicle



Mercedes



Iveco and Mercedes



AUXILIARY SHOWER:

Use the small round silver key to lock or unlock the vehicles outside auxiliary shower at either the rear of the vehicle or driver's side



helphub.starr.com



helphub.jucy.com

02 Vehicle equipment



FIRE EXTINGUISHER

Each vehicle is equipped with a dry chemical fire extinguisher, meticulously selected to address both type B fires (involving grease and liquids) and type C fires (involving electrical elements). To deploy the extinguisher effectively, grasp the ring situated atop the bottle, direct the nozzle towards the top of the flames, and press down the lever firmly. Guide the nozzle from side to side to cover the entire width of the base of the flames.

*Fire extinguisher is attached to the interior of the vehicle



SMOKE ALARMS

Each vehicle is furnished with a smoke alarm, serving as a crucial element for your safety and security. This alarm is energized by a replaceable 9-volt battery. Should a replacement be warranted during the duration of your rental, kindly procure a new battery, retain the receipt, and upon vehicle return, reimbursement will be facilitated accordingly.

***DO NOT DISCONNECT THE SMOKE ALARM. IT MUST BE CONNECTED AT ALL TIMES FOR YOUR SAFETY.**



helphub.starrv.com



helphub.jucy.com

03. Starting the vehicle



Gear stick in parking mode



Gear stick must be in PARK and your foot on the pedal for the vehicle to start.

The dashboard will display a 'P' indicating that the vehicle is in park. Start the vehicle using the ignition key.



Gear stick in driving mode



With your foot still on the brake pedal, pull the gear stick down into the 'D' position. The dashboard will display a 'D' indicating that the vehicle is in drive.

Disengage the hand brake by clicking it down once. A white light will disappear. To engage the handbrake, pull the handbrake button towards you. A white light will appear.

CAUTION –

Handbrake is on the righthand side of the steering wheel. Do not forget to disengage the handbrake before you drive. Vehicle will signal the handbrake is still on via a loud beeping sound.

Some vehicles may have a folding handbrake, that allows you to fold the hand brake down without turning it off. This enables you to move around freely in the front cabin while the vehicle is parked without the obstruction of the handbrake.



- a) To engage handbrake, push button in and lift as usual
- b) To disengage, push button in and release down as usual
- c) To lay handbrake down without turning off, ensure the handbrake is in the engaged position and push down without pressing the button. To disengage again before driving, pull handbrake back to the top again. Once at the top, push button and pull handbrake slightly up again before pushing to the floor.



helphub.starrv.com



helphub.jucy.com

04. Windows & vents

WINDOWS

To open the windows on board your vehicle, turn the handles inwards. Push the window out and click the latch in place. The window has a mosquito net and a sun blackout blind. These can be used separately. To use the mosquito net, pull the white blind down using the handle indents. To use the sun blackout blind, pull the blind up using the handle indents.



VENT

To open the vent, twist the handle clockwise.

To close the vent, twist the handle anti-clockwise.

To use the flyscreen, pinch the top buttons together and pull to the left.

To use the blackout blind, pinch the bottom buttons together and pull to the left



**Please note, some vents may vary between models*



helphub.starrv.com



helphub.jucy.com

05. Entry door



External view



Internal view

The entrance door may be opened from outside the vehicle by pulling the door handle outward.

To open the door from the inside, pull the door handle downwards and apply slight pressure to the door. When the door is locked, neither the inside nor outside door handle can be operated.

To lock the entry door from outside, turn the key anti-clockwise towards the lock symbol on your entry door lock. To unlock the entry door, turn the key clockwise towards the unlock symbol on your entry door lock.

***Please note, doors may vary between models**

Try our online **help hub.**



helphub.starrv.com



helphub.jucy.com

06. Outdoor step

Your motorhome is equipped with an electric side doorstep. Please make sure you press the down button to open the step and up button to close the step. The switch to operate the step is located on the righthand kitchen wall.

Please note: Do NOT try to manually open or close the step.



Step button for Iveco



07. Seatbelts & baby seats

It is the law in Australia that all passengers in a motorhome must be properly restrained with seatbelts. Vehicles are equipped with both lap and shoulder belts. Only seats fitted with seatbelts can be occupied while the vehicle is moving. To use, insert the belt tongue into the correct buckle until you feel it click and latch.



The two anchor points for the baby seats are located on the forward-facing seat at the dinette behind the driver's cabin (highlighted above). Attach the baby seat to the circled anchor points and fasten with the seatbelt.

Please note: The table must be removed at all times while passengers are sitting at the dinette seats while in transit.

STEP BY STEP PROCEDURE TO INSTALL A BABY SEAT

Step 1: Remove both the back cushions for easy access.

Step 2: Place the tether strap over the back of the seat

Step 3: Firmly attached the tether strap to the anchor point.

Step 4: After attaching the baby seat to the anchor point, pull the strap to tighten the seat as much as possible and put the back rest cushion back in place.

Step 5: Thread the motorhome's seat belt through the forward-facing seat belt path on the baby seat from one end and buckle on the other side. After pulling the belt through and buckling it, push down on the baby seat and pull on the belt so that it locks.

Step 6: Once the baby seat is firmly secured, please place the remaining part of the back cushion in original position.



helphub.starrv.com



helphub.jucy.com

08. 240-volt electrical system



To run the microwave, power points, air conditioner and to recharge the house battery, connect the motorhome's 15 AMP electricity cord to a 240-volt external power source. The listed devices will only work if you are connected to 240-volt power. It is recommended that every second night, the vehicle is charged at a powered outlet to keep batteries charged.

***Please ensure to plug in on driver's side. The outlet on the passenger side is intended to plug in your own accessories ONCE the vehicle has been plugged into an external power source from the driver's side**

The motorhome connects to powered outlets at caravan parks.



The 240-volt outlets and appliances inside the motorhome are protected by a circuit breaker. This device is intended to protect you from electrical shock hazards when you are using electrical appliances. If you experience a power surge where the circuit breaker trips, locate the circuit breaker inside the motorhome on the main switch board and switch back to ON/UP position.

Overloading the 240-volt system will cause the circuit breakers to turn off. This can happen if using multiple 240-volt items at once. Main cause could be if trying to use air conditioner and microwave at the same time.

Troubleshooting: If you are experiencing difficulty in charging the vehicle, ensure that the power point at the caravan park is in working order.

Unplug the van from the powered outlet at the caravan park.

Attach an alternative device (mobile phone, toaster etc.) into the power lead on the van and check the lead is in working order.

Plug the device directly into the powered outlet at the caravan park. If there is an issue with the powered outlet, inform caravan park staff.



helphub.starrvc.com



helphub.jucy.com

09.12-volt electrical system

Your motorhome has three batteries, one in the engine compartment and two in the rear of the cabin. The battery inside the cabin is also called the auxiliary battery. The engine compartment battery is located under the passenger's side cabin floor, in the main driver's cabin.

The auxiliary battery operates the TV, water pump, fridge and interior lights and is charged by both the alternator when the vehicle is being driven and the 240-volt system when it is plugged in to a mains power source.



The 12-volt electrical panel is located above the fridge inside your motorhome, it will be labelled "Main Switch Board". Once you have pushed down the silver button to open the cupboard, you will find the panel that operates light, fridge, water pump, water heater, toilet, rangehood, media and ACC. For any appliance to work, the relevant switch must be turned on

and a red light will appear. The 240-volt circuit breaker, battery charge panel, fresh water and grey water gauge, hot water switch, media player, microwave plug, and fridge plug can also be found inside. The battery indicator below must be above 12-volt for appliances to run on the house battery. The house battery can only last up to two days before it MUST be charged again to avoid any issues.

12-volt Battery Charging Time

Drive at least 30/40km to get back up to 12-volt from approx. 10-volt if the battery is still in good condition

Using 240-volt power should charge back over 12-volt after 10 to 15 minutes

IMPORTANT If you are going off grid for a few days, ensure you have a full battery (12-volt) as your battery will only last up to two days when used conservatively.



Try our online **help hub**.



helphub.starrv.com



helphub.jucy.com

ACCESSORIES

There are multiple power points throughout the vehicle for personal devices to be connected. These will **ONLY** operate when the vehicle is connected to 240-volt power. Location of the power points may vary dependent on vehicle model, but are typically located on the kitchen bench, under the middle table, on the wall underneath the TV and outside underneath the awning.





helphub.starrv.com



helphub.jucy.com

10. Microwave

The microwave in your motorhome will only operate via 240-volt power. This means that you **must** have the electric cord plugged into a powered site at a caravan park/campground.

When you are using the microwave, please be aware that there are certain materials that must not be put in the microwave.



NOT Recommended

- Paper bags – except the obvious like popcorn bags which are designed to be microwaved – are a fire hazard.
- Aluminium foil.
- Never use dishes with metal rims.
- Plastic containers – can melt.
- Wire ties from bread and metal utensils.
- Styrofoam plates and cups – can melt.
- Glass jars – can shatter.

Recommended

- Microwave approved glass, ceramic plates and bowls.
- Microwave browning dishes.
- Microwave plastic wrap, wax paper, paper towel and napkins.
- Paper plates and cups.

TROUBLESHOOTING THE MICROWAVE

Problem: Microwave is inoperative and there is no display.

Possible cause: 240-volt power is not plugged in to an outlet. Check that the vehicle is connected to mains power and that the powered outlet is in working order.

Problem: Microwave is operable (light on, turntable working) but is not heating food.

Possible cause: Microwave may be broken. Please call the JUCY on roads team for assistance.

Problem: Sparks or arcing when microwave is turned on.

Possible cause: Metal object in microwave.



helphub.starrv.com



helphub.jucy.com

11. Freshwater tank & water access

On board the vehicle is a freshwater system consisting of a water pump and freshwater tank. The water tank has a 120L freshwater tank and is located on the passenger side of the vehicle. This water is for the sink, shower and toilet flush. We recommend that you fill up your freshwater tank as often as possible. This can be done by inserting the blue hose located in the rear storage unit into the tank (as far as possible) and using the attachment on the other end to connect to an external tap.



To access fresh water from the sink, turn on the water pump switch on the main switch board panel and lift the lever on the tap.

Please note: You can check the level of your water using the left gauge on the 12-volt switchboard as seen below. Do not drink water from tank.





helphub.starrv.com



helphub.jucy.com

12 Greywater tank

The grey water holding tank collects wastewater from the kitchen, bathroom sink and shower. You can check the level of your water using the right gauge on the 12-volt switchboard as seen below.



It is not uncommon for the grey water level indicator to give an inaccurate reading. It may show 100% even if it is empty. We recommend emptying your grey water tank as regularly as possible.

To empty the grey water tank:

1. Collect the grey water hose from the storage compartment.
2. Connect the hose to the outlet. Make sure it is firmly attached by pulling down the silver levers on each side of the attachment.

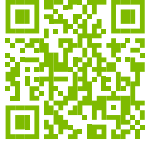


3. Place the other end of the hose into the dump station disposal opening.
4. Open the tank by turning the red lever towards you so it is parallel with the pipe and wait for it to empty.
5. Once the grey water is empty, close the lever and remove the hose and stow away in the storage compartment.

Should the grey water tank become obstructed during your journey, we recommend inserting a hose into the grey water outlet as far as it reaches. Turn on the hose to its highest pressure setting and direct the flow of water into the tank until it reaches full capacity. Once achieved, withdraw the hose, facilitating the flow of grey water. If needed, repeat this process until the obstruction is cleared.



helphub.starrv.com



helphub.jucy.com

13. Water pump

To use water on board the vehicle, ensure there is water in your freshwater tank by checking the gauge. On the switchboard, flip the water pump switch. You will hear the pump quietly start up. The pump operates as part of the 12-volt system. When you are not using the water pump, ensure it is turned off.

You must have this this button on to operate the kitchen tap, shower, and the toilet flush.



Please note: Avoid running the pump when the water tank is empty. Operating the pump continuously with no water can cause damage.



helphub.starrv.com



helphub.jucy.com

14. Hot water heater

The switch to activate the gas-operated water heater system is situated in the main switch board.

To operate the water heater in your vehicle, please follow the below steps:

Step 1: Turn the gas bottle, located in the rear doors under the bed, to the 'on' position, ensuring the valve is fully opened. Twist the valve on the gas bottle counterclockwise to open and clockwise to close. Note: The system will not function if there's insufficient gas in the bottle.

Step 2: Activate the water pump and water heater switch on the 12-volt switchboard.



Step 3: Adjust the 'Boiler' switch upwards to the 60-degree mark.

Step 4: Observe a brief flash of a red light on the 'Boiler' switch, which should then extinguish, indicating the system's operation. Should the red light persist, signalling that the burner has not ignited, cease all operations, reset the switch to the neutral 'O' position, and retry. You may attempt this up to three times. If ignition is not achieved by the third attempt, allow the system to rest for 10-15 minutes before retrying.



If the red light is not continuously illuminated, the system will proceed to heat water for your shower and sink. It typically takes around 20-25 minutes for the water to reach the desired temperature.

Please note: Your motorhome is additionally outfitted with a 240-volt hot water system. When connected to mains power, this system will automatically activate and commence heating the water. If the water has already been heated via the 240-volt mains power, the gas operation for the hot water will be inactive.



helphub.starrv.com



helphub.jucy.com

15. Toilet use

1. Turn on the water pump on the 12-volt control panel.



Diagram A

2. Push the blue button on the toilet to fill the base with water (diagram A)



Diagram B

3. Once finished, adjust the lever on the bottom of the toilet to empty into cassette (diagram B)



Diagram C

4. Ensure the lever is in the closed position after use (diagram C)



helphub.starrv.com



helphub.jucy.com

16. Toilet cassette

It is highly recommended to regularly empty the toilet cassette, and it is mandatory to empty and clean it before returning the vehicle to the depot. To empty the cassette, lift the blue lever and remove the entire cassette from the vehicle.

Should the cassette become jammed, refrain from applying excessive force. Instead, ensure that the toilet cavity inside the vehicle is securely closed. Once the cassette is removed from the vehicle, rotate the pour-out spout, and unscrew the cap. Dispose of the waste at a designated black water dump point.

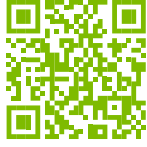
After emptying the toilet cassette, rinse it thoroughly and repeat the emptying process. Then, add a toilet chemical along with half to a litre of water.

Please note: It is crucial for the cassette to click back into position to align with the toilet above.





helphub.starrv.com



helphub.jucy.com

17. Gas bottle

The gas bottle is located on the exterior of the vehicle in a locker marked by an LP gas storage label.



IMPORTANT: Never drive with the gas bottle turned to the 'open' position.

To open the gas bottle, rotate the valve fully in an anti-clockwise direction. To close the gas bottle, turn the valve on top of the gas bottle clockwise until it's securely tightened.

If you detect the smell of gas:

1. Extinguish all open flames and smoking materials.
2. Refrain from touching any electrical switches.
3. Shut off the gas supply at the gas bottle using the valve on top of the bottle.
4. Open doors, windows, hatches, and any other ventilation openings.
5. Evacuate the area until the gas odour dissipates.
6. Contact JUCY for assistance.



helphub.starrv.com



helphub.jucy.com

18. Stove top & grill

Warning: It is not safe to use cooking appliances for comfort heating.



How it operates

The gas burners in the vehicle operate on LPG. The basic operation is the same as a gas stove in a house. However, the amount of oxygen in a motorhome is limited due to its size; therefore, always have sufficient ventilation when using the stove.

Using the stove top

The stove top in the motorhome has an igniter switch. Ignite the stove using the igniter switch.

Locate the gas bottle on the outside of the van and turn the valve on top of the gas bottle fully to the 'open' position.

Lift glass stove lid so it is fully upright. If your lid is partially open, the burners on the stove top will not work



Push in, hold down and turn the burner knob to your desired heat level.

Whilst the burner knob is still being pushed in, press the igniter switch until the gas lights. Keep holding down the burner knob.



Wait approximately 15 seconds before slowly releasing the burner knob.

Please Note: If the flame extinguishes the burner knob may have been released too soon. Start from step two and try again.

To operate the grill, select the knob at the far end marked 'grill'. This device is operated the same way as the gas stove. Make sure stove top lid is fully opened when operating the grill.

If using a match

Danger: Misuse of the gas stovetop can result in fire and explosion in a motorhome/campervan just as it can in a kitchen. Use extreme caution when lighting the stovetop burners with a match. To prevent too much unburned gas from accumulating, first light the match, hold it next to the burner then open the burner valve.

If the stove does not ignite there may be insufficient power in the battery to provide a spark. You must connect to mains power or alternatively, use a match to light the stove.

Please note: The stove top lid must be in a fully upright position for the hotplate and grill to ignite.

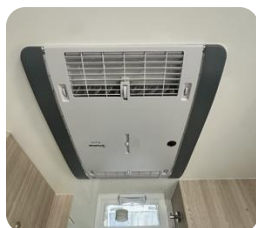


helphub.starrv.com



helphub.jucy.com

19. Heater & air conditioner



The vehicle is equipped with a reverse cycle air conditioner. This will generate both hot and cold air to suit your needs. The air conditioner only works when plugged into 240-volt power.



Operating the air conditioner:

1. Plug the vehicle into 240-volt mains power.
2. Turn on the unit by pressing the blue power button on the remote control.
3. Select the mode.
4. Adjust the temperature using wither the plus button (for higher) or minus button (for lower).

IMPORTANT: Always ensure to turn off the air conditioner unit using the remote before disconnecting the vehicle from the 240-volt mains power.

Using the air conditioner in humid and hot conditions:

When utilizing the air conditioner in humid climates, it's essential to take extra precautions to ensure optimal performance and minimize potential issues.

- If leaving the vehicle unattended for an extended period, keep curtains/blinds closed to maintain a cooler internal temperature.
- Before activating the air conditioner, ventilate the interior by opening doors and windows to expel warm air from the motorhome, thus reducing the internal temperature.
- Once the internal temperature has sufficiently decreased, close all windows and external doors before switching on the air conditioner.
- Adjust the temperature to 23°C while ensuring the fan operates at maximum speed. Avoid setting the temperature below this level.
- By adhering to these guidelines, you can reduce the risk of condensation, which may lead to water overflow within the motorhome.

Please note: During periods of high temperature, air conditioners may experience fluctuations in power due to voltage drops from the 240-volt power source. This can result in blown internal fuses, causing the air conditioner to malfunction.

Using the air conditioner in cold conditions:

- The air conditioning units may cease functioning when temperatures drop below 4°C.
- If this occurs, wait for the temperature to rise before attempting to use the air conditioner again.



helphub.starrv.com



helphub.jucy.com

20. Fridge

The fridge on board your motorhome operates via a three-way system. To operate the fridge, follow these instructions:



Locate the fridge switch in the main switch board panel. We recommend keeping this on for the duration of your journey to avoid the fridge from warming up. The fridge will require at least 6-12 hours to cool down again if turned off.

Activating your fridge will illuminate the operation panel situated between the fridge and freezer compartments. The screen will display "Auto," indicating that the settings have been automatically configured to switch between battery, gas, and power modes. If a red error code appears on the panel, please refer to the error table at the end of this section for troubleshooting information.



Note: The 12-volt source operates only when the vehicle is being driven. The gas supply functions only when the vehicle is off, not parked on an angle, is NOT connected to 240-volt, and the gas valve is open. The 240-volt power is available only when connected to an external power source.



helphub.starrv.com



helphub.jucy.com

Manually switching the fridge modes



240-volt: To be only used when plugged into 240-volt mains power. To manually select the 240-volt operation, press the silver dial and turn until the second bar, labelled "Auto," is highlighted, press again click to select. Turn the dial again until you see the 'plug' symbol highlighted with a white border and press to select. Turn the dial to press the back arrow and return to home screen.

Note: The vehicle must be parked on level ground to operate the fridge on 240-volt mains power.



Battery: The 12-volt source operates only when the vehicle is being driven to manually select the 12-volt operation, press the silver dial and turn until the second bar, labelled "Auto," is highlighted, press again click to select. Turn the dial again until you see the 'battery' symbol highlighted with a white border and press to select. Turn the dial to press the back arrow and return to home screen.

Note: If you try to use the battery when stationary it will not work. The fridge may beep and the display screen will continuously flash.



Gas: To be only used when stationary and NOT plugged into 240-volt mains power. To manually select the gas operation, press the silver dial and turn until the second bar, labelled "Auto," is highlighted, press again click to select. Turn the dial again until you see the 'flame' symbol highlighted with a white border and press to select. Turn the dial to press the back arrow and return to home screen.

Note: When using gas, ensure your gas bottle is open correctly. The vehicle must be parked on level ground to operate the fridge on gas.

PLEASE NOTE: It is highly recommended to use the fridge in Automatic mode. In automatic mode the fridge will automatically selects the best source available.

Try our online **help hub**.



helphub.starrv.com



helphub.jucy.com

To set the temperature of the fridge, press the silver dial. It automatically highlights the temperature bar on the first click. Turn the dial to the desired temperature (the more bars, the cooler the fridge will become).

Pull the levers shown below to open the fridge and freezer compartment door



PLEASE NOTE: Do not over fill the shelves inside the fridge. Excess weight can damage the fridge shelves. Evenly distribute weight on the shelves.

Refrigerator general troubleshooting

It is highly recommended to use the fridge in Automatic 'AUTO' mode. In 'AUTO' mode the fridge will automatically select the best source available.

Make sure the vehicle is parked on a level ground for your fridge to work properly when you are using either 240-volt mains power or Gas. The fridge will NOT work and it will NOT achieve optimum cooling temperature if the vehicle is parked on tilted/inclined surface.

If the outside temperature is more than 34 degrees, put an ice bag at the bottom shelf of your fridge and freezer to achieve optimum cooling performance.



helphub.starrv.com



helphub.jucy.com

Troubleshooting fridge error codes

| Error Code | Possible cause | Solution |
|--|--|---|
| E03 | No connection between power module and display | <p>Turn fridge switch off and on again.</p> <p>Press Silver button down for three seconds to reset fridge. Once you hear the first beep, release your finger.</p> <p>If the problem still exists, contact JUCY Roadside assistance.</p> |
| E07: No cooling capacity in gas mode. The refrigerator does not work | The gas cylinder is empty | Replace the gas cylinder |
| | The gas valve is closed | Twist the valve open very slowly |
| | Air is in the supply line | <p>Press Silver button down for three seconds to reset fridge. Once you hear the first beep, release your finger.</p> <p>Switch the refrigerator off and on again. Repeat the procedure three to four times if necessary.</p> <p>If the problem still exists, contact JUCY Roadside assistance.</p> <p>Check if the vehicle is at an angle and adjust so it is level, if necessary.</p> |
| E08: No cooling capacity in 240-volt power mode. The refrigerator does not work | The fuse in the AC mains is defective | <p>Check the circuit breaker. The fridge switch fuse may need to be replaced.</p> <p>If the problem still exists, contact JUCY Roadside assistance.</p> |
| | The vehicle is not connected to the AC mains | Check if the mains power is available and vehicle is properly connected to power |
| | The AC heating element is defective | <p>Check if the device is at an angle and adjust it so it is level, if necessary.</p> <p>Press Silver button down for three seconds to reset fridge. Once you hear the first beep, release your finger.</p> <p>If the problem still exists, contact JUCY Roadside assistance.</p> |



helphub.starrv.com



helphub.jucy.com

| | | |
|--|--|--|
| <p>E09: No cooling capacity in 12-volt power mode. The refrigerator does not work</p> | <p>The vehicle battery is discharged</p> | <p>Recharge the 12-volt battery ¹</p> <p>Press Silver button down for three seconds to reset fridge. Once you hear the first beep, release your finger.</p> <p>If the problem still exists, contact JUCY Roadside assistance.</p> |
| | <p>The vehicle ignition switch is not turned on</p> | <p>Make sure the vehicle is running</p> |
| | <p>The DC heating element is defective</p> | <p>If the problem still exists, contact JUCY Roadside assistance.</p> |
| | <p>The fuse in the DC Supply is defective</p> | <p>Check the circuit breaker. The fridge switch fuse may need to be replaced.</p> <p>If the problem still exists, contact JUCY Roadside assistance.</p> |
| <p>E12</p> | <p>Gas valve test error Gas operation not possible</p> | <p>Turn off gas valves then very slowly turn on again.</p> <p>Press Silver button down for three seconds to reset fridge. Once you hear the first beep, release your finger.</p> <p>If the problem still exists, contact JUCY Roadside assistance.</p> |

¹ 12-volt Battery Charging Time

Driving- drive at least 30/40km to get back up to 12-volt from approx. 10-volt if the battery is still in good condition

Powered site: Using 240-volt power should charge back over 12-volt after 10 to 15 minutes

IMPORTANT If you are going off grid for a few days, ensure you have a full battery (12-volt) as your battery will only last up to two days when used conservatively



helphub.starrv.com



helphub.jucy.com

| | | |
|-----|---|--|
| E13 | Internal communication error Gas operation not possible | <p>Press Silver button down for three seconds to reset fridge. Once you hear the first beep, release your finger.</p> <p>If the problem still exists, contact JUCY Roadside assistance.</p> |
| E14 | In stand-alone gas mode: The battery charge of the battery packs is too low | <p>Recharge 12-volt battery</p> <p>Turn fridge off and on again.</p> <p>If the problem still exists, contact JUCY Roadside assistance.</p> |
| E50 | Gas lock after 3 ignition attempts | <p>Ignition not possible.</p> <p>Press Silver button down for three seconds to reset fridge. Once you hear the first beep, release your finger.</p> <p>OR</p> <p>The gas cylinder is empty. Replace the gas cylinder.</p> <p>Press Silver button down for three seconds to reset fridge.</p> |
| E51 | Gas lock, internal error in the power module | <p>Press Silver button down for three seconds to reset fridge. Once you hear the first beep, release your finger.</p> <p>If the problem still exists, contact JUCY Roadside assistance.</p> |
| E52 | Ground contact, gas valve | <p>Press Silver button down for three seconds to reset fridge. Once you hear the first beep, release your finger.</p> <p>If the problem still exists, contact JUCY Roadside assistance.</p> |
| E53 | Ground contact, ignition electrode | <p>Press Silver button down for three seconds to reset fridge.</p> <p>If the problem still exists, contact JUCY Roadside assistance.</p> |



helphub.starrv.com



helphub.jucy.com

| | | |
|---------------------------------------|---|--|
| Refrigerator has insufficient cooling | The ventilation around the cooling unit is not sufficient | Check that the ventilation grille is not obstructed |
| | The evaporator is iced up | Check whether the refrigerator door is properly closed. Defrost the refrigerator |
| | The temperature is set too high. | Set a lower temperature. |
| | The ambient temperature is too high. | Remove the ventilation grille for a while so that warm air can escape quicker. |
| | Too much food at once was placed in the refrigerator | Remove an item |
| | Too much warm food at once was placed in the refrigerator | Remove the warm food and leave it to cool down before putting it in again. |
| | The refrigerator has not been operating for very long. | Check the temperature again after four or five hours. |
| | Vehicle is not parked on ground level | Make sure the vehicle is parked on level ground |



helphub.starrv.com



helphub.jucy.com

21. Lights

To use the cabin lights, turn on the light switch in the main switch board.



Use the switches located on the right-hand wall of the kitchen and next to TV. Location and sizes may vary depending on vehicle model.



You can operate each light directly by pressing the button located on the device. The switches next to side entrance door will turn on your outdoor lights underneath the awning.



Please Note:

Once you have finished using the lights, turn them off at the device as well as at the 12-volt panel to conserve battery power.



helphub.starrv.com



helphub.jucy.com

22. Television

Each vehicle is fitted with a smart television for your entertainment. You can find the remote conveniently located in the main switch board cupboard. The TV operates on both 12-volt and 240-volt mains power. Additionally, it features various apps such as Netflix, Prime Video, Kayo and more, accessible when connected to Wi-Fi and internet.

Kindly note that television reception may vary in rural areas. We highly recommend bringing your own DVDs to utilize with the in-built DVD player for uninterrupted entertainment.





helphub.starrv.com



helphub.jucy.com

23. Media

Turn on the media switch to operate the media player in the main switch board. This will turn on the speakers in the back cabin and the outdoor speakers located on the passenger side. See below for the function of each button.

1. Settings
2. Select between Bluetooth and radio options (please see 7)
3. Rewind
4. Forward
5. On/Off
6. Play/Pause
7. After pressing button "2", rotate button "7" to navigate through the available options. Additionally, press the 7 again to access the volume settings. Rotate the knob to adjust the volume up or down. You can change the volume for the inside and outside speakers by pressing the button to select "Area 1" (inside), press again to select "Area 2" (outside), or press once more to adjust both volumes simultaneously.
8. To return to the main page, press button "2" again.





helphub.starrv.com



helphub.jucy.com

24. Bed conversion

There are three double beds on board your motorhome. To make up each of the beds, please follow these instructions:

BED 1 (middle dinette)

Step 1: Remove the tabletop from the table leg by turning the top handle underneath the table in an anti-clockwise direction 3 turns and remove the table from the pole.

Don't fully unwind the top handle otherwise it will remove itself from the mechanism.

Step 2: Remove the table leg from its attachment point by pulling it away.

Step 3: Insert the tabletop between the two seats so that it is resting on the ledges to make up the base of the bed.

Step 4: Using the cushions from the seats, arrange these so the bed looks like Diagram A

Step 5: Extend the bed arms using the handles to establish the double bed. (Diagram B)

Step 6: Finalise the bed by using the backrest from the rear dinette. (Diagram C)



Diagram A



Diagram B



Diagram C

Try our online **help hub**.



helphub.starrv.com



helphub.jucy.com

BED 2 (Rear dinette)

Step 1: Remove the tabletop from the table leg by turning the top handle underneath the table in an anti-clockwise direction 3 turns and remove the table from the pole.



Don't fully unwind the top handle otherwise it will remove itself from the mechanism.

Step 2: Remove the table leg from its attachment point by pulling it away.

Step 3: Rest the tabletop on the ledges of the seating area to make up part of the bed base.



Step 4: Use the back-rest cushions to complete the mattress.



Try our online **help hub**.



helphub.starrv.com



helphub.jucy.com

BED 3 (Overhead bed)

The overhead bed should be accessed by the ladder stored in the overhead compartment. This ladder must be connected to the attachment points horizontally to ensure that it is secure for use. The bed can then be secured with the provided net.



Try our online **help hub**.



helphub.starrv.com



helphub.jucy.com

25. Storage units

Storage cupboards are located above both the middle and rear tables for storing personal items during your journey. To open or close, simply press the silver button. Some models may also feature storage units beside the rear couches, complete with hangers for added convenience.





helphub.starrv.com



helphub.jucy.com

26. Awning

To roll out the awning:



1. Find the awning winder arm located in the rear storage unit



2. Place the silver knob on the end of the arm into the small insert on the lefthand side of the awning

3. Rotate the handle in a clockwise direction to open the awning (Please note that if the legs of the awning have not been locked in correctly, they may fall out when opening. Ensure nobody is standing directly under the awning when opening)

4. Once the awning is open, remove the awning winder arm by pushing upwards and turning the silver knob into a position where it can be removed



5. Release awnings legs and twist to face the vehicle
6. Use the knob at the top of the awning leg to loosen then lengthen

Try our online **help hub.**



helphub.starrv.com



helphub.jucy.com



7. Once the leg is lengthened, insert the silver piece into the rectangular white inserts located next to the freshwater tank and to the left of the side entrance door



Use to loosen and lengthen the leg



Use to rotate awning in and out

To roll up the awning:

1. Remove the legs from the white insert
2. Turn the legs clockwise and secure back into place (ensure the leg is straight and not loose before rolling up)
3. Use the awning winding arm in an anti-clockwise direction until the awning has fully retracted



helphub.starrv.com



helphub.jucy.com

27. Diesel fuel

The vehicle accepts diesel fuel only. DO NOT refill the motorhome with any other fuel or fluid. The diesel tank cap is marked with DIESEL on it and is unlocked using the vehicle diesel key. The fuel filling location is located next to the passenger door. Simply open the lid using your hands, then use the diesel key to unlock. Turn the key anticlockwise to unlock the cap.

Once filled with diesel, place the fuel cap on the inlet and turn the key clockwise to lock it.

IMPORTANT: The vehicle accepts diesel fuel only. If you fill the vehicle with unleaded, water or AdBlue, please do not start the engine and call JUCY Roadside Assistance immediately.





helphub.starrv.com



helphub.jucy.com



28. AdBlue

Every 2500 km the vehicle will require AdBlue to be refilled.

If the AdBlue level is low, a warning light or symbol illuminates on the dashboard and a message advises you to top up the AdBlue tank.

Please find the nearest fuel station or auto shop which supplies AdBlue and refill the vehicle with AdBlue as soon as possible. Failure to refill the AdBlue tank will result in the vehicle going into limp mode.

Below are the locations for the AdBlue on our 2 vehicle models:

| MERCEDES | IVECO |
|--|---|
| 20L AdBlue tank | 20L AdBlue tank |
| Located under bonnet | Located next to driver side front door |
|  |  |

Please Note: AdBlue is NOT a diesel fuel additive. DO NOT add or mix with diesel under any circumstances.