

New Zealand – Self Contained

Condo Gen 1



Try our online help hub.



Helphub.starrv.com helphub.jucy.com

Condo – Gen 1 vehicle **MANUAL**

Contents

Description of Keys.....	3
Fire Extinguisher.....	4
Starting the Vehicle.....	5
Windows & Vents.....	6
240-Volt electrical system	7
12-volt electrical system	8
Freshwater tank and water access.....	9
Greywater Tank	10
Water Pump.....	11
Toilet.....	12
Tap & Sink	13
Gas Stove	14
Fridge.....	15
Lights.....	16
Dining Table.....	17
Power points.....	18
Bottom Bed	19
Top Bed	21
Storage.....	22
Fuel.....	23
Jack & Spare Tyre	24
Additional Information.....	25
Dash warning lights	26

Try our online help hub.



Helphub.starrv.com helphub.jucy.com

Condo-Gen 1 vehicle MANUAL

Description of Keys



IGNITION KEY:

Use this key to start your vehicle



FRESH WATER KEY:

Use this key to lock/unlock the freshwater tank cap



GAS LOCKER KEY:

Use this key to lock/unlock the gas locker

Try our online help hub.



Helphub.starrv.com helphub.jucy.com

Condo-Gen 1 vehicle **MANUAL**

Fire Extinguisher



FIRE EXTINGUISHER

Each vehicle is equipped with a dry chemical fire extinguisher, selected to address both type B fires (involving grease and liquids) and type C fires (involving electrical elements).

To deploy the extinguisher effectively, grasp the ring situated at the top of the bottle, direct the nozzle towards the base of the flames, and press down the lever firmly. Guide the nozzle from side to side to cover the entire width of the base of the flames.

* A fire extinguisher is attached to the interior of the vehicle.



Condo-Gen 1 vehicle MANUAL

Starting the Vehicle

Gear stick in parking mode



Gearstick must be in PARK and your foot on the pedal for the vehicle to start.

The dashboard will display a 'P' indicating the vehicle is in Park.

Start the vehicle using the ignition key.

Gear stick in driving mode



With your foot still on the brake pedal, pull the gear stick down into the 'D' position. The dashboard will display a 'D' indicating the vehicle is in Drive.



To disengage the handbrake, grip the handle and feel for the button under your finger. Squeeze the button, then turn the handle in an anticlockwise direction.

The handle will be released and can be pushed away from you, towards the floor.

To engage the handbrake, grip the handle and pull it towards you.

Please note: The handbrake is located below the gear stick.



Condo- Gen 1 vehicle MANUAL

Windows & Vents

WINDOWS:

To use the window:

1. Unlock from the middle latch and Push the window to the right



VENTS:

To use the vents:

Option 1 – To open the vents, push the button grab the rail and pull it towards yourself. The vent has a mosquito net and a sun blackout blind. To use the mosquito net, pull the blind to the left using the handle indents and to use the sun blackout blind pull the blind to the right using the handle indents.



Option 2 – To open the vent turn the knob clockwise and to close the vent, turn it anticlockwise.



Try our online help hub.



Helphub.starrv.com helphub.jucy.com

Condo-Gen 1 vehicle **MANUAL**

240-Volt electrical system

The vehicle is equipped with a 240-volt electrical system which can be used to run the power points and recharge the domestic battery. The external plug is located on the driver's side of the vehicle.

Electrical appliances will only work when the van is plugged into an external power source.

To use the 240-volt electrical system:

1. Connect the vehicle's 15AMP electrical cord to a 240-volt external power source.

Please Note: It is recommended that the vehicle is plugged into power every 2nd night to keep the domestic battery charged.



Try our online help hub.



Helphub.starrv.com helphub.jucy.com

Condo-Gen 1 vehicle **MANUAL**

12-volt electrical system

Your vehicle has two batteries. One for the engine and the other for the domestic functions.

The domestic battery operates the water pump, fridge, interior lights, and radio. The domestic battery is charged by the alternator when the vehicle is being driven and the 240-volt system when it is plugged into an external power source.

The 12-volt electrical panel is located beside the rear seat on the driver's side of the vehicle.





Condo-Gen 1 vehicle MANUAL

Freshwater tank and water access



On board the vehicle is a freshwater system consisting of a water pump and freshwater tank.

The water tank has an 80L capacity and is located on the passenger side of the vehicle. This water is for the sink, shower, and toilet flush.

To fill the freshwater tank:

1. Flip opens the compartment that says "Fresh Water Only"
2. Place the end of the water hose into the tank and connect the hose to the tap to fill the vehicle with fresh water.



Note: Do not use too much pressure as the tank must be vented when filling. In the event of an air bubble, simply remove the hose, reinsert and fill slowly again.

The tank is full when the water starts to overflow from the water inlet.

Please note: The water from the vehicle tap is not suitable for drinking.



Condo-Gen 1 vehicle MANUAL

Greywater Tank

The greywater holding tank collects wastewater from the kitchen sink.

It is not uncommon for the greywater level indicator to give an inaccurate reading. It may show 100% even if it is empty. We recommend emptying your greywater tank as regularly as possible.

To empty the greywater tank:

1. Collect the greywater hose from the storage compartment.
2. Connect the hose to the outlet. Make sure it is firmly attached.
3. Place the other end of the hose into a dump station disposal opening.
4. Open the tank but pulling the lever located at the base of the rear cabinet OR on the rear undercarriage on the passenger side of the vehicle and wait for it to empty.
5. Once the grey water is empty, close the lever and remove the hose. Stow the hose away in the storage compartment.



Try our online help hub.



Helphub.starrv.com helphub.jucy.com

Condo-Gen 1 vehicle MANUAL

Water Pump

To use the water pump:

1. Ensure there is water in your freshwater tank
2. On the 12-volt panel, turn the water pump on. You will hear the pump quietly start up. The pump operates as part of the 12-volt system. (You must have this button on to operate the kitchen tap)
3. When you are not using the water pump, ensure it is turned off.









Please note: Avoid running the pump when the water tank is empty. Operating the pump continuously with no water can cause damage.

Caution: Do not drink the water from the tap unless it's boiled first.



Condo-Gen 1 vehicle MANUAL

Toilet

To use the toilet			
	<p>1. Pull out the toilet from its position under the sink</p>		<p>2. Fill up the tank with fresh water</p>
	<p>3. To pump water into the bowl pump this button</p>		<p>4. to empty into the tank, Pull the lever at the front of the toilet. Close after its empty</p>
	<p>To empty the toilet:</p> <ol style="list-style-type: none">1. Unlock the two side latches and separate the two tanks.2. Remove the freshwater tank and then remove the cap to empty the waste holding tank.	 	

Try our online help hub.



Helphub.starrv.com helphub.jucy.com

Condo- Gen 1 vehicle **MANUAL**

Tap & Sink

The vehicle comes equipped with a pressurized water system

To use the tap:

1. Turn on the water pump using the button on the control panel
2. You will now be able to turn the tap on



Try our online help hub.



Helphub.starrv.com helphub.jucy.com

Condo-Gen 1 vehicle MANUAL

Gas Stove

The vehicle is equipped with a gas stove.

Please note: This stove is not designed for use with pans larger than 20cm.

To use the gas cooker:

1. You will need to unlock the LPG storage area located outside the vehicle. Turn the gas valve anticlockwise to open it. Turn it slowly and carefully. You should feel the valve loosen as you turn
2. Press the ignition button on the stove. Turn the knob to allow the gas to flow, whilst pressing the ignition button until the flames light
3. Hold the button for a few seconds, then release
4. Adjust the flame. Turn to your desired level.

CAUTION: Always have the vehicle well-ventilated while using the gas cooker.

DO NOT leave the gas bottle valve on when not in use



Try our online help hub.



Helphub.starrv.com helphub.jucy.com

Condo-Gen 1 vehicle MANUAL

Fridge

The fridge in your vehicle operates via the 12-volt and 240-volt system.

To use the fridge:

1. Turn on the fridge switch on your control panel.
2. Check that the light is illuminated in the fridge– this indicates the fridge is on and working.
3. The thermostat can be found inside the fridge. The optimal range for the fridge is halfway between the minimum and maximum temperature settings.

Note: *If the vehicle is NOT plugged into the mains and is left stationary for an extended period, leaving the fridge on could drain the domestic battery.*





Condo- Gen 1 vehicle MANUAL

Lights

The vehicle is equipped with cabin lights

To use the lights:

1. Press the required light button on the main control panel.
2. To turn the lights on, gently press the circle indent button as shown below.



Outside Light:

To operate the outside light, flick the orange button located above the sliding entry door. It will illuminate.





Condo-Gen 1 vehicle MANUAL

Dining Table

Outside Dining

The vehicle is equipped with an outside table which is connected to the kitchen cabinet.

1. To set up, unhook the elastic clip and extend the table leg



Inside Dining

The vehicle also has an inside dining table.

1. To set this up, place the table mounts (Diagram A) into the mounting brackets (Diagram B)



Diagram A

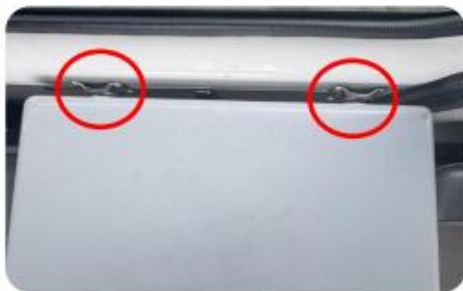


Diagram B



Try our online help hub.



Helphub.starrv.com helphub.jucy.com

Condo- Gen 1 vehicle **MANUAL**

Power points

The vehicle is equipped with 2 power points located next to the driver's side rear seat. These will only work when the vehicle is plugged into an external power source.



The vehicle is equipped with USB charger ports which are located next to the fridge. These will work when the vehicle is plugged in and when the 12-volt control panel is turned on.





Condo-Gen 1 vehicle MANUAL

Bottom Bed

The vehicle has 2 double beds

Bottom Bed:

1. Locate the small square squab, located behind the front seats. Make sure it is firmly secured, for safety reasons
2. Undo the black elastic strap
3. Use the strap located in the middle and pull towards the two rear seats until they are connected
4. Once connected, make sure it is fully secured to the 2 rear seats.
5. Put small squab to connect to the middle squab



Try our online help hub.



Helpub.starrv.com helpub.jucy.com

Condo- Gen 1 vehicle MANUAL

6. All 3 squabs should now be flat and secured



7. Long single squab to be placed behind 2 front seats, pull front seat forward and place squab in the space



8. All squabs should be flat and firmly secured





Condo-Gen 1 vehicle MANUAL

Top Bed

To use the top bed:

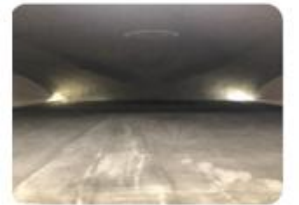
1. Use the foot pedal located on the side of the vehicle to assist with accessing the top bed safely
2. Unclip both hooks to release the bed net



3. Pull the middle tab to get the mattress out



4. Top bed is now flat and secure



5. To access the top bed, you will need to step on the rear seat. DO NOT step on the middle bed, bottom squab



6. Securely place your foot on the side foot pedal, located on the right or lefthand side of the sliding door



7. Place hand on the side handle to push yourself up onto the roof bed



Try our online help hub.



Helphub.starrv.com helphub.jucy.com

Condo- Gen 1 vehicle **MANUAL**

Storage

The vehicle has a dedicated storage area located under the middle sliding compartment of the bottom bed.



Try our online help hub.



Helphub.starrv.com helphub.jucy.com

Condo- Gen 1 vehicle **MANUAL**

Fuel

When operating the vehicle, it is essential to use Unleaded 91 Petrol.

To ensure you are using the correct fuel, always check the fuel sticker located on the fuel door or on the fuel cap.



Try our online help hub.



Helphub.starrv.com helphub.jucy.com

Condo- Gen 1 vehicle MANUAL

Jack & Spare Tyre

To access the jack tools, open the sliding door and locate the compartment on the left side. Inside this compartment, you will find the essential tools required for safely changing a tyre. Always ensure the vehicle is parked on a stable surface before using the tools.



The spare tyre can be found on the front of the vehicle, however, in some vehicles, it may be located on the back.

To access the spare tyre on the front, remove the wheel cover then use the wheel brace to remove the wheel nuts and release and remove the spare wheel.

To access the spare tyre located under the rear of the van, use the wheel brace as per the picture below. Unscrew the bolt located on the inside rear of the vehicle on the floor anticlockwise. Be careful when as the tyre can heave and drop when released.



Always make sure the spare tyre is securely fastened before driving.



Try our online help hub.



Helphub.starrv.com helphub.jucy.com

Condo-Gen 1 vehicle MANUAL

Additional Information







Tyre size	195/R15
Tyre pressure	50 PSI
Oil type	10W40
Coolant type	Red Coolant (any brand)

Note: **Do not mix coolant colours.** If the coolant in the vehicle is red, use red. If green, use green.



Condo- Gen 1 vehicle MANUAL

Dash warning lights





Warning Light Symbol	Warning Light	Description	What to Do if the Light Comes On
	Brake Warning (Red)	Handbrake engaged or low brake fluid. If with ABS light, brake fault.	Pull over safely & avoid sudden braking. If the light comes on with ABS light, stop immediately & contact Roadside Assistance.
	ABS Warning (Amber)	ABS fault – brakes work without ABS. If with brake light, possible brake failure.	If on alone, drive cautiously & check as soon as possible. If with brake light, stop immediately & call Roadside Assistance.
	Electronic Stability Control (Amber)	Traction control fault; flashing = active, constant = fault.	Drive with caution. Restart engine; if still on, contact Roadside Assistance.
	Electronic Brakeforce (Amber/Red)	The braking system has malfunctioned	You can still drive very cautiously & contact Roadside Assistance.
	Airbag/SRS (Red)	Fault in airbag or seatbelt system.	Contact Roadside Assistance.
	Coolant Overheat (Red)	Engine overheating – possible low coolant or leak.	Stop immediately & contact Roadside Assistance.

Try our online help hub.



Helphub.starrv.com helphub.jucy.com

Condo- Gen 1 vehicle MANUAL

	Battery Charge (Amber/Red)	Battery not charging.	Contact Roadside Assistance.
	Oil Pressure (Red)	Low oil pressure or high oil temp.	Stop immediately & contact Roadside Assistance.
	Engine Management (Amber)	Fault with engine or emissions.	Continue to destination & then contact Roadside Assistance.
	Immobilizer (Amber)	Anti-theft fault or key battery issue.	Continue driving & contact Roadside Assistance.