

# Australia **Crib+**



## **Vehicle manual.**



helphub.starv.com



helphub.jucy.com

# Crib+ vehicle **MANUAL**

## Contents

---

<b>Description of keys.....</b>	<b>03</b>
<b>Vehicle equipment.....</b>	<b>04</b>
<b>Starting the vehicle.....</b>	<b>05</b>
<b>Blinds .....</b>	<b>06</b>
<b>12-volt electrical system .....</b>	<b>07</b>
<b>Fresh water tank .....</b>	<b>08</b>
<b>Grey water .....</b>	<b>09</b>
<b>Portable gas stove .....</b>	<b>10</b>
<b>Grey water tank .....</b>	<b>11</b>
<b>Tap &amp; sink.....</b>	<b>13</b>
<b>Fridge .....</b>	<b>14</b>
<b>USB Chargers.....</b>	<b>15</b>
<b>Bed .....</b>	<b>16</b>
<b>Rooftop tent .....</b>	<b>19</b>
<b>Storage .....</b>	<b>21</b>
<b>Unleaded fuel .....</b>	<b>22</b>
<b>Spare Tyre and Tools.....</b>	<b>23</b>
<b>Child Seats and Booster Seats.....</b>	<b>24</b>



helphub.starrv.com



helphub.jucy.com

# 01. Description of keys

---



## **IGNITION KEY:**

Use for:

1. Start your vehicle



helphub.starrv.com



helphub.jucy.com

# 02. Vehicle equipment

---

## FIRE EXTINGUISHER

Each vehicle is equipped with a dry chemical fire extinguisher, selected to address both type B fires (involving grease and liquids) and type C fires (involving electrical elements). To deploy the extinguisher effectively, grasp the ring situated atop the bottle, direct the nozzle towards the top of the flames, and press down the lever firmly. Guide the nozzle from side to side to cover the entire width of the base of the flames.



\*Fire extinguisher is attached to the interior of the vehicle



helphub.starrv.com



helphub.jucy.com

## 03. Starting the vehicle

Gear stick must be in PARK and your foot on the pedal in order for the vehicle to start.

The dashboard will display a 'P' indicating that the vehicle is in park. Start the vehicle using the ignition key.



*Gear stick in parking mode.*

With your foot still on the brake pedal, pull the gear stick down into the 'D' position. The dashboard will display a 'D' indicating that the vehicle is in drive.



*Gear stick in driving mode.*

**CAUTION** – Handbrake is located next to the brake pedal. Press with your foot to engage and disengage. When the brake is engaged, you will hear a continuous beeping noise.



*Handbrake engaged*



*Handbrake disengaged*

Try our online **help hub**.



helphub.starrv.com



helphub.jucy.com

## 04.Blinds

---

The vehicle is equipped with privacy curtains on the rear window, side windows and between the front cab and the back cab. These blinds can be rolled up when not in use.



Try our online **help hub**.



helphub.starrv.com



helphub.jucy.com

## 05.12-volt electrical system

---

Your vehicle has two batteries. One in the engine compartment and one in the rear of the cabin. The battery inside the cabin is also called your domestic battery. The engine compartment battery is located under the bonnet.

The domestic battery operates the water pump, esky & rear interior light. The domestic battery is charged by the alternator when the vehicle is being driven.

You can see the voltage of the 12-volt battery using the voltage reader on the side of the bed



**IMPORTANT** – It is recommended that the vehicle is driven for 4-6 hours a day for the domestic battery to continue to operate the 12-volt system.



helphub.starrv.com



helphub.jucy.com

## 06. Fresh water tank

---

The freshwater tank is located in the rear of the vehicle, in the kitchen area.

### To fill the freshwater tank:

1. Flip up the compartment that says, "Fresh water only".
2. Place the end of the water hose onto the tank and connect the hose to the tap to fill the vehicle with fresh water.

Note: Do not use too much pressure as the tank must be vented when filling. In the event of an air bubble, simply remove the hose, reinsert it and fill slowly again. The tank is full when the water starts to overflow from the water inlet.



Try our online **help hub**.



helphub.starrv.com



helphub.jucy.com

## 07. Grey water

---

Any water that goes down your sink will come out of the left side of the rear undercarriage of the vehicle.



helphub.starrv.com



helphub.jucy.com

## 08. Portable gas stove

The vehicle is equipped with a portable butane gas stove which can be found in the kitchen compartments in a black carry case.

Inside the vehicle, the cooker is to be only used on the kitchen stove but can be used outside on a side table.

The cooker is designed to be used for very short periods – no longer than fifteen minutes at a time.

This cooker is not designed for use with pans larger than 200mm.

1. To start remove gas cooker from the black carry case and place on a flat surface.



2. Open cartridge cover and place gas cartridge in.



3. Turn the ignition knob to "OFF" and set the cartridge lock lever to "UNLOAD".





helphub.starrv.com




helphub.jucy.com

4. Open the cartridge cover, slide the gas cartridge, top end first and with its notch up, in the compartment.

5. Align cartridge collar notch with the locator tab on the gas cooker as per photo.

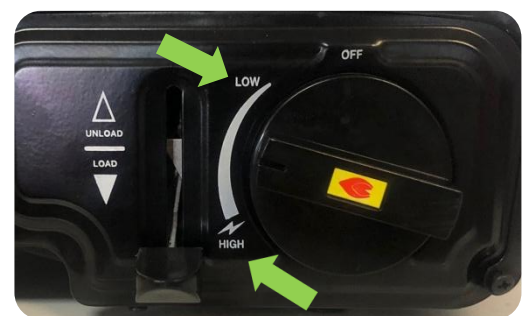


6. Push and turn the knob to anti-clockwise past the  position until a click is heard.



**Please Note:** If the burner fails to light, immediately turn the ignition knob to "OFF" position and restart again.

The flame can be controlled by turning the ignition knob between the "HIGH" and "LOW" position.



Try our online **help hub**.



helphub.starrv.com



helphub.jucy.com

Turn the ignition knob to "OFF" to shut off fuel supply.

Wait until the flame is fully extinguished before performing the next step.

Raise the cartridge lever to "UNLOAD" and remove the gas cartridge from the compartment.

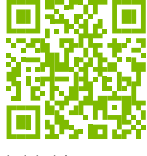
Do not leave the gas bottle inside the gas cooker when not in use.



Try our online **help hub**.



helphub.starrv.com



helphub.jucy.com

## 09. Tap and sink

---

The vehicle comes equipped with a water system. To operate the tap, push and pump the handle so the water comes out of the faucet.



Try our online **help hub**.



helphub.starrv.com



helphub.jucy.com

## 10. Fridge

---

The fridge in your vehicle operates via the 12-volt system. To operate the fridge, ensure that it is plugged in and the green light is illuminated on the side of the fridge.



**IMPORTANT** – It is recommended that the vehicle is driven for 4-6 hours a day for the domestic battery to continue to operate the 12-volt system.

Try our online **help hub**.



helphub.starrv.com



helphub.jucy.com

# 11. USB chargers

---

The vehicle is equipped with 4 USB Powerpoints on the side of the bed. These run off the 12-volt battery.





helphub.starrv.com



helphub.jucy.com

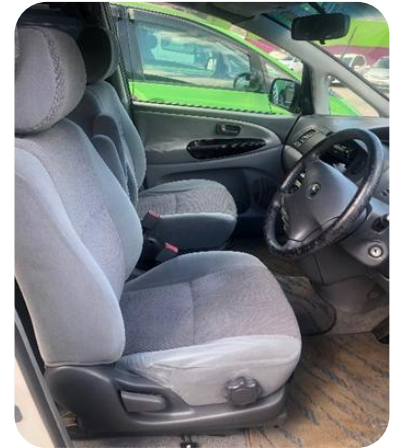
# 12. Bed

---

The vehicle is equipped with 1 double bed that also serves as the dining area & back seats during the day.

## Night time set up

1. Pull the black lever up that is located under the front seats. Move the two front seats forward as far as they will go.



2. Pull the grey lever UP, this is located on the right-hand side of the driver's seat and left -hand side of the passenger seat. Once you have pulled the lever up the chair will bend forward as far as it will bend.



3. Unhook the black bungy cord





helphub.starrv.com



helphub.jucy.com

4. Pull both tabs towards you, so the rear chairs a bent slightly forward. Bottom tab pull UP, this will move the rear chair back as far as it will go.



5. Place top cushion on the rear chairs, slide the middle part of the bed to connect to the rear



6. Once you have completed Step 4,5 & 6 bed should look like the photo above.



7. Lower the front bed side down to connect to the middle bed part.



8. Bed is flat and secure, ready to use.



Try our online **help hub**.



helphub.starrv.com



helphub.jucy.com

## Daytime set up

The pole and tabletop are located under the bed. Place the pole into the hole on the floor and place the tabletop onto the pole.



## Driving set up





helphub.starrv.com



helphub.jucy.com

# 13. Rooftop tent

## UP

1. Undo all latches around vehicle



2. Push passenger side up



3. Push driver side up



4. Using the ladder stored under the rear chair, extend and lock into place



5. Place the ladder to the anchor points as seen



Try our online **help hub**.



helphub.starrv.com



helphub.jucy.com

## DOWN

1. Pull the strap on the driver's side down



2. Secure the driver side latches
3. Pull the passenger side down
4. Secure the passenger side latches
5. Secure the rear and front latches

Try our online **help hub**.



helphub.starrv.com



helphub.jucy.com

## 14. Storage

---

The vehicle has a dedicated storage area under the bed to store personal items.





helphub.starrv.com



helphub.jucy.com

## 15. Unleaded fuel

---

The vehicle accepts unleaded fuel only. DO NOT refill the vehicle with any other fuel or fluid. The fuel tank cap is marked with "Fill me up with 91" on it and can be opened by unscrewing the cap. The fuel filling location is located on the passenger side of the vehicle.

Once filled with unleaded fuel, place the fuel cap on the inlet and turn the cap to lock it.



**IMPORTANT:** The vehicle accepts unleaded fuel only. If you fill the vehicle with diesel, water or AdBlue, please do not start the engine and call JUCY Roadside Assistance immediately.



helphub.starrv.com



helphub.jucy.com

# 16. Spare Tyre and Tools

---

The spare tyre is located underneath the rear of the vehicle.



The tools to use to change the tyre are located inside the kitchen cupboard in the rear, behind the plastic cover against the wall on the left.



You will need to pull the plastic cover off to access the tools behind it.





helphub.starrv.com



helphub.jucy.com

# 17. Child Seats and Booster Seats

---

Ensuring the safety of children while traveling in vehicles is of paramount importance. Australia has stringent laws and guidelines regarding child / baby / infant seat and booster seat requirements to protect young passengers.

These regulations are designed to reduce the risk of injury in the event of an accident and to ensure that children are securely and correctly restrained at all times.

***It is the customer's responsibility to install the child restraint in the vehicle. Branch staff are not certified to fit them or advise on how they should be fitted.***

For detailed information and updates on child seat and booster requirements, please refer to the respective government transportation websites and road safety authorities in Australia.

Please refer to the guide below to see where the anchor points are located within your vehicle. For more information, visit our Helphub.



## **Crib+**

2 anchor points in roof.  
1 centre anchor point on the back of the seat.