

Australia **Condo**_{Gen1}



Vehicle manual.

Try our online **help hub**.



helphub.starrv.com



helphub.jucy.com

Condo Gen1 vehicle **MANUAL**

Contents

Description of keys	03
Vehicle equipment	04
Starting the vehicle	05
Baby seat installation	06
Windows & vents	07
240-volt electrical system	08
12-volt electrical system	09
Fresh water tank & water access	10
Grey water tank	11
Water pump	12
Toilet cassette	13
Tap & sink	14
Portable gas stove	15
Fridge	18
Lights	19
Dining table	20
Power points	21
Bed	22
Storage	26
Fuel	27
Spare Tyre and Tools	28



helphub.starrv.com



helphub.jucy.com

01. Description of keys



IGNITION KEY:

Use for:

1. Start your vehicle
2. Unlock/ lock diesel tank cap



FRESH WATER KEY:

Use for:

1. Unlock/ lock freshwater compartment



helphub.starrv.com



helphub.jucy.com

02. Vehicle equipment

FIRE EXTINGUISHER



Each vehicle is equipped with a dry chemical fire extinguisher, meticulously selected to address both type B fires (involving grease and liquids) and type C fires (involving electrical elements). To deploy the extinguisher effectively, grasp the ring situated atop the bottle, direct the nozzle towards the top of the flames, and press down the lever firmly. Guide the nozzle from side to side to cover the entire width of the base of the flames.

*Fire extinguisher is attached to the interior of the vehicle



helphub.starrv.com



helphub.jucy.com

03. Starting the vehicle

Gear stick must be in PARK and your foot on the pedal in order for the vehicle to start.



Gear stick in parking mode

The dashboard will display a 'P' indicating that the vehicle is in park. Start the vehicle using the ignition key.



Gear stick in driving mode

With your foot still on the brake pedal, pull the gear stick down into the 'D' position. The dashboard will display a 'D' indicating that the vehicle is in drive.

Disengage the hand brake by twisting & pushing it down. A red exclamation mark will disappear from the dashboard. To engage the handbrake, pull the handbrake up. A red exclamation mark will appear.

CAUTION – Handbrake is located below the gear stick.





helphub.starrv.com



helphub.jucy.com

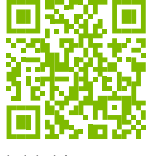
04. Baby seat installation



The 2 anchor points for baby seats are located on the rear of the vehicle (as pictured). To install the baby chair, feed the tether strap over the headrest and connect to the anchor point. Thread the vehicle seatbelt through the seat belt path on the baby seat from one end and buckle on the other side. Ensure the seatbelt is firmly secured.



helphub.starrv.com



helphub.jucy.com

05. Windows & vents

To open the windows on board your vehicle, push the window to the right.



To open the vents, push the button circled below, grab the rail and pull it towards yourself.

The vent has a mosquito net and a sun blackout blind. To use the mosquito net, pull the blind to the left using the handle indents. To use the sun blackout blind, pull the blind to the right using the handle indents.





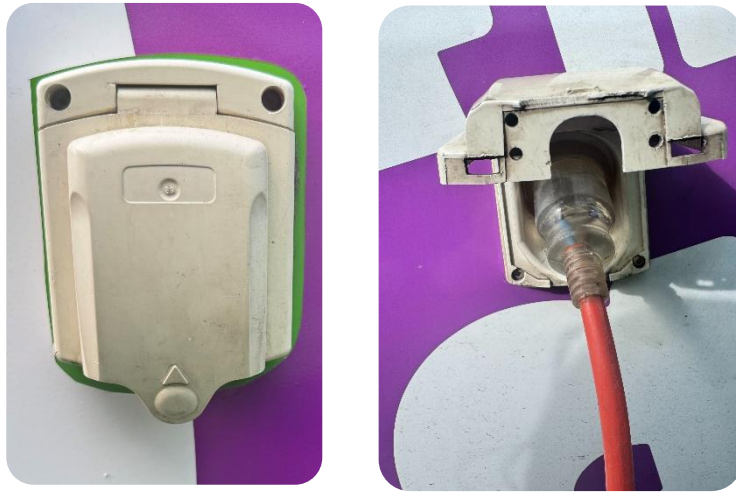
helphub.starrv.com



helphub.jucy.com

06.240-volt electrical system

To run the power points and to recharge the house battery, connect the vehicles 15AMP electrical cord to a 240-volt external power source. The above items will only work when plugged into power. It is recommended that the vehicle is plugged into power every 2nd night to keep the house battery charged.



The 240-volt external plug is located on the driver's side of the vehicle.



helphub.starrv.com



helphub.jucy.com

07.12-volt electrical system

Your vehicle has two batteries. One in the engine compartment and one in the rear of the cabin. The battery inside the cabin is also called your domestic battery. The engine compartment battery is located under the passenger's side cabin floor, in the main driver's cabin.

The domestic battery operates the water pump, fridge, interior lights and radio. The domestic battery is charged by the alternator when the vehicle is being driven and the 240-volt system when it is plugged into mains power source.

The 12-volt electrical panel & the 12-volt reader is located beside the driver's side rear seat.



IMPORTANT – It is recommended that the vehicle is driven for 4-6 hours a day for the domestic battery to continue to operate the 12-volt system.



helphub.starrv.com



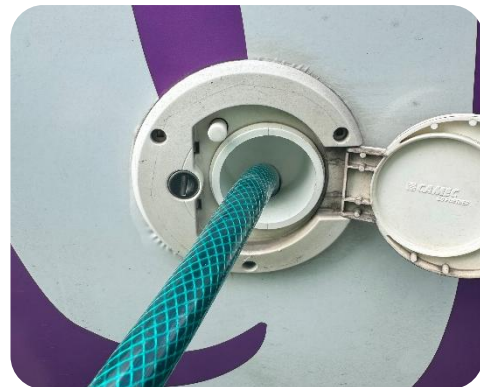
helphub.jucy.com

08. Fresh water tank & water access

On board the vehicle is a freshwater system consisting of a water pump and freshwater tank. The water tank has a 50L freshwater tank and is located on the passenger side of the vehicle. This water is for the sink, shower and toilet flush.

To fill the freshwater tank:

1. Flip up the compartment that says, "Fresh water only".
2. Place the end of the water hose into the tank and connect the hose to the tap to fill the vehicle with fresh water.



Note: Do not use too much pressure as the tank must be vented when filling. In the event of an air bubble, simply remove the hose, reinsert it and fill slowly again. The tank is full when the water starts to overflow from the water inlet.



09. Grey water tank

The grey water holding tank collects wastewater from the kitchen sink.

We recommend emptying your grey water tank as regularly as possible.

To empty the grey water tank:

1. Collect the grey water hose from the storage compartment.
2. Connect the hose to the outlet. Make sure it is firmly attached.
3. Place the other end of the hose into the dump station disposal opening.
4. Open the tank by pulling the lever located at the base of the rear cabinet or on the rear undercarriage on the passenger side of the vehicle and wait for it to empty.
5. Once the grey water is empty, close the lever & remove the hose and stow away in the storage compartment.



Should the grey water tank become obstructed during your journey, we recommend inserting a hose into the grey water outlet as far as it reaches. Turn on the hose to its highest pressure setting and direct the flow of water into the tank until it reaches full capacity. Once achieved, withdraw the hose, facilitating the flow of grey water. If needed, repeat this process until the obstruction is cleared.



helphub.starrv.com



helphub.jucy.com

10. Water pump

To use water on board the vehicle, ensure there is water in your freshwater tank outside. On the 12-volt panel, switch the water pump on. You will hear the pump quietly start up. The pump operates as part of the 12-volt system. When you are not using the water pump, ensure it is turned off. You must have this this button on to operate the kitchen tap.



Please Note: Avoid running the pump when the water tank is empty. Operating the pump continuously with no water can cause damage.



helphub.starrv.com



helphub.jucy.com

11. Toilet Cassette

It is highly recommended to regularly empty the toilet cassette, and it is mandatory to empty and clean it before returning the vehicle to the depot. To empty the cassette, ensure the side valve is closed. Unlock the two side latches and separate the two tanks. Remove the freshwater tank and then remove the cap, empty the waste holding tank.



Try our online **help hub.**



helphub.starrv.com



helphub.jucy.com

12 Tap and sink

The vehicle comes equipped with a water system. To operate the tap, turn on the water pump switch on the control panel. You will then be able to turn the tap on.





helphub.starrv.com



helphub.jucy.com

13. Portable gas stove

The vehicle is equipped with a portable butane gas stove which can be found in the compartment under the bottom bed in a black carry case. The cooker is designed to be used for very short periods – no longer than fifteen minutes at a time.

This cooker is not designed for use with pans larger than 200mm.

1. To start remove gas cooker from the black carry case and place on a flat surface.



2. Open cartridge cover and place gas cartridge in.



3. Turn the ignition knob to "OFF" and set the cartridge lock lever to "UNLOAD".





helphub.starrv.com




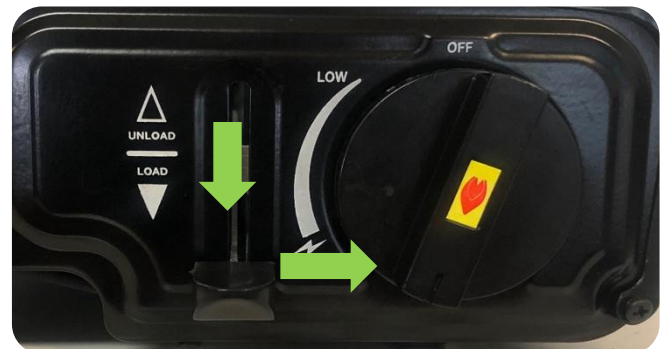
helphub.jucy.com

4. Open the cartridge cover, slide the gas cartridge, top end first and with its notch up, in the compartment.

5. Align cartridge collar notch with the locator tab on the gas cooker as per photo.



6. Push and turn the knob to anti-clockwise past the  position until a click is heard.



Please Note: If the burner fails to light, immediately turn the ignition knob to "OFF" position and restart again.

The flame can be controlled by turning the ignition knob between the "HIGH" and "LOW" position.



Try our online **help hub**.



helphub.starrv.com



helphub.jucy.com

Turn the ignition knob to “OFF” to shut off fuel supply.

Wait until the flame is fully extinguished before performing the next step.

Raise the cartridge lever to “UNLOAD” and remove the gas cartridge from the compartment.

Do not leave the gas bottle inside the gas cooker when not in use.





helphub.starrv.com



helphub.jucy.com

14. Fridge

The fridge in your vehicle operates via the 12-volt & 240-volt system. To operate the fridge, follow the below steps:

1. Turn on the fridge switch on your control panel.
2. Check that the blue light is on in the fridge above the power button – this will indicate the fridge is on and working.
3. The thermostat can be found on the side of the fridge. Optimal range for the fridge is halfway between the minimum and maximum temperature settings.





helphub.starrv.com



helphub.jucy.com

15. Lights

Cabin Light

To operate the cabin lights, turn on the lights switch on the main control panel.

To turn the lights on, press the circle indent button lightly as shown below.



Outside Light

To operate the outside light, flick the orange button located above the sliding entry door. It will illuminate orange.





helphub.starrv.com



helphub.jucy.com

16. Dining table

Rear dining

The vehicle is equipped with an outside table connected to the kitchen cabinet.

To set up, unhook the bungee clip and extend the table leg.



Inside dining

The vehicle is equipped with an inside dining table.

To set up, place the table mounts (Diagram A) into the mounting brackets (Diagram B).



Diagram A

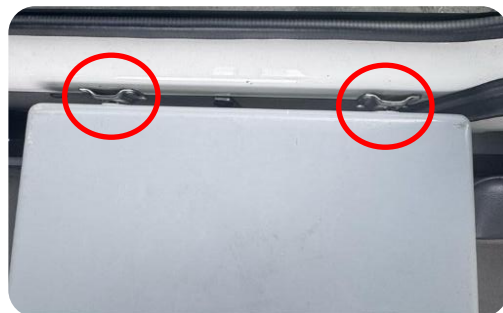


Diagram B





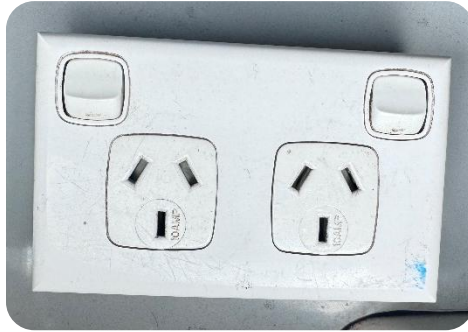
helphub.starrv.com



helphub.jucy.com

17. Power points

The vehicle is equipped with 2 power points located next to the driver's side rear seat. This will only work when the vehicle is plugged into 240-volt mains power.



The vehicle is equipped with 4 USB charger ports located next to the fridge. These will work when the vehicle is plugged in and when the 12-volt control panel is turned on.





helphub.starrv.com



helphub.jucy.com

18. Bed

The vehicle is equipped with 2 double beds.

Bottom Bed

1. Locate the small square squab on the rear facing bench seat.



2. Make sure that the small square squab is firmly secured in for safety reasons.



3. Undo the black bungy strap.



4. Use the strap located in the middle and pull towards the two rear seats until they are connected.



5. Once connected make sure its fully secured to the two rear seats.



Try our online **help hub.**



helphub.starrv.com



helphub.jucy.com

6. Pull small squab to connect to the middle squab



7. All 3 squabs should be now be flat and secured.



8. Long single squab to be placed behind 2 front seats, pull front seat forward and place squab in the space.



9. All squabs should be flat and firmly secured.





helphub.starrv.com



helphub.jucy.com

Top Bed

To access the top bed, securely clip the top of the ladder into the bed frame.

1. Unclip both hooks to release the bed net.



2. Pull middle tab to get the mattress out.



3. Top bed is now flat and secure.



Try our online **help hub**.



helphub.starrv.com



helphub.jucy.com

4. To access the top bed you will need to step on the rear seat. DO NOT step on the middle bottom squab.



5. Securely place your foot on the side foot ladder, located on the right or left handside of the sliding door beams.



6. Place hand on the side handle to push yourself up to the roof bed.



Try our online **help hub.**



helphub.starrv.com



helphub.jucy.com

19. Storage

The vehicle has a dedicated storage area located under the middle sliding compartment of the bottom bed.





helphub.starrv.com



helphub.jucy.com

20. Fuel

When operating the vehicle, it is essential to confirm the type of fuel it requires, as some vehicles use diesel fuel while others use unleaded fuel. To ensure you are using the correct fuel, always check the fuel sticker located on the fuel door or on the fuel cap. Additionally, review the rental agreement for the specific fuel requirements.





21. Spare Tyre and Tools

To access the tools, open the sliding door and locate the compartment on the left side.

Inside this compartment, you will find the essential tools required for safely changing a tyre.

Always ensure the vehicle is parked on a stable surface before using the tools.



The spare tyre can be found underneath at the back of the vehicle.

To access the spare tyre located under the rear of the van, use the wheel brace as per the picture below. Unscrew the bolt located on the inside rear of the vehicle on the floor anticlockwise.

Be careful when as the tyre can heave and drop when released.



Always make sure the spare tyre is securely fastened before driving.

